



Brixham C of E Primary School

School Prospectus 2021

Welcome to Brixham C of E Primary School

Dear Parent,

There are few things more important than the education of your child and the selection of your child's school is a crucial decision. We hope that the information in the prospectus helps you make the right decision and gives you an insight into the ways we endeavour to meet the needs of all our children.

All schools have their own distinctive 'feel' which makes each one unique. We believe that the 'family feel' at Brixham C of E Primary School is what makes us stand out.

As a church school, our vision is: **'life in all its fullness'**

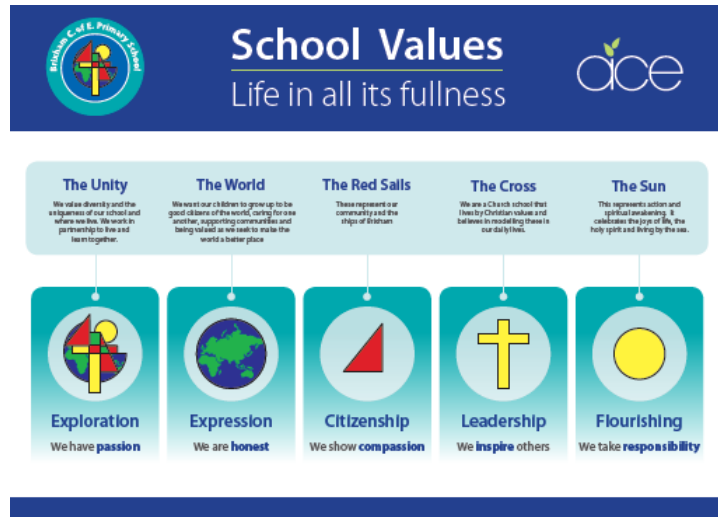
This is at the heart of all we do. We believe that every child is entitled to a quality education in a caring, inspiring and happy learning environment. Our vision reflects our passionate commitment to learning and recognition of the uniqueness of our individual learners. It is driven by our desire to offer the best possible education for our pupils allowing them to flourish in all they do.

We hope that the information in this prospectus captures the flavour of our school and we hope that you enjoy reading it. We would invite you to discover the distinctiveness of Brixham C of E Primary and we look forward to meeting you and discussing your child's needs.

Cristy Nelson
Headteacher



Our Values

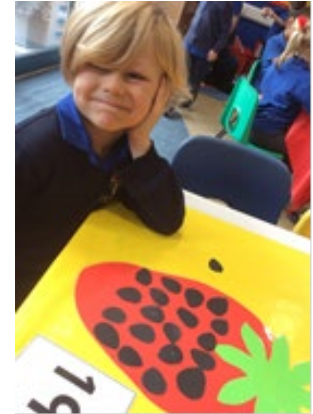


Our Christian values underpin the ethos of our school and contribute to our distinctiveness, they are strongly linked to our area and what makes us unique. Our values are a fundamental expression of what we think and what we believe. We enable our children to become the best learners they can be, we foster and value independence, creative enquiry and collaboration to become lifelong learners. We help our children to acquire the relevant skills through exciting and engaging learning experiences.



Every Child Matters

At Brixham C of E our children are taught to stay safe, be healthy, enjoy their learning and achieve their best, to contribute positively to their community and acquire the skills to achieve economic well-being. Through our curriculum, we are ambitious for our children, we believe that every child can thrive.

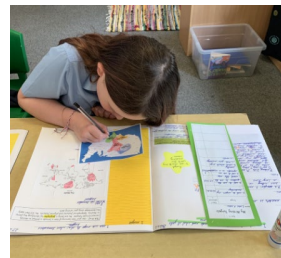


Learning and the Curriculum

Learning extends across all aspects of school life and reflects both our ethos and values. The curriculum comprises of all learning and experiences that we plan for our pupils. We are committed to high standards and provide enriching learning experiences that develop each child's skills and abilities. We aim to foster a life-long love of learning and a spirit of enquiry.

Our curriculum is constantly evolving to develop the skills needed for the children to become success learners, help prepare them for modern life in Britain and empower them to achieve success in the future. Our aim is to deliver a dynamic and innovative curriculum that challenges, excites and inspires the children to become confident, caring and curious individuals who achieve their best and can contribute to the world around them. We hope to promote and sustain a thirst for knowledge and understanding, and a love of learning.

Our curriculum is planned in learning experiences. These are chosen to capture the interests and imaginations of our children and are based around academic skills and knowledge, the development of character and the skills needed to become lifelong learners.



Inclusion, Equal Opportunities and Diversity

We recognise the diversity of our children and believe that regardless of background, ethnicity, race or religion they should reach their full potential. We are committed to providing an equal opportunity for all children to achieve this goal through our approach to providing quality teaching and learning and access to a full range of opportunities. This means that children who may have been identified special educational needs receive tailored support. High achieving children are also recognised and planned for allowing challenge and success for all.

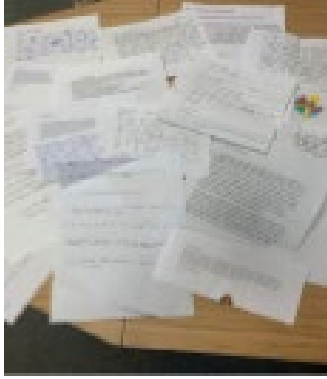


Forest School and Outdoor Learning

Forest School is a Scandinavian initiative designed to encourage and inspire individuals of any age through an innovative, long term, educational approach to outdoor play and learning in a woodland environment. As a school we are very fortunate in having our own woodland area and several teachers trained to deliver the Forest Schools programme. Forest Schools is offered to our pupils. Sessions are designed around the needs of the group to ensure that they are learner-led. Sessions are designed around a theme; themes are sometimes subtle such as evolving or exploring the site or more obvious such as spies, poets, explorers, fairies or nature investigators.

Teamwork skills are developed through games and activities. Individual skills and self-esteem are heightened throughout activities such as hide and seek, shelter building, tool skills, lighting fires or environmental art, the list is endless. Each activity develops intra and inter-personal skills as well as practical and intellectual skills while developing character.





Care and Behaviour

Every child really does matter and at Brixham C of E Primary School. Each child is considered a unique creation and values as part of our caring community. We have high standards of behaviour and a positive behaviour policy. Children are encouraged to care for each other, to treat each other as they would like to be treated themselves and to forgive each other when things go wrong. We offer quality pastoral care and are responsive to the individual needs of the children and their families.



Part of the Community

The school enjoys great partnership and support from the community, near and far and these broaden our children's horizons. We are extremely lucky to be part of such a rich community that prides itself on its heritage. Our Church and parish links are strong with shared worships and events.



Partnership with Parents

The school operates an 'Open Door Policy' and parents are very much welcomed into our community. They are encouraged to be fully involved and take an active part in school events and activities. We communicate regularly with families and work in partnership to support the children in our care. Our families can access our learning and communication platforms to find out more about what is going on. If there are any concerns, we always aim to resolve them positively and we welcome constructive feedback.

We are fortunate to have an active Parents, Teacher and Friends Association that consists of parents, teachers, friends and other staff. As a parent, you are automatically a part of this association and your support and interest plays a vital part in the life of the school. Through the PTFA, a number of fundraising and social events are organised throughout the year, the proceeds of which benefit the children.



Keeping Children Safe

Child Protection and Safeguarding

Our school community has a legal duty to safeguard and promote the welfare of our children. This means that we have a Child Protection Policy and we ensure that all staff and volunteers are aware of our procedure and follow them constantly. In putting children first, sometimes we may need to share information with other agencies when there are concerns about a child's welfare. We will always discuss this with parents first unless we have reason to believe that this might not be in the interest of the child. The Designated Child Protection Officer is the Headteacher.

Growing, Food for Life and Healthy Choices

Brixham C of E is committed to giving children the opportunity to make healthy choices. The school enjoys all the benefits of in-house catering: Delicious meals that are freshly prepared, nutritionally balanced with locally sourced ingredients- often organic. We actively promote our school meals and encourage our children to take full advantage of them. We have a poly-tunnel and vegetable beds which are used to grow some of our own food. This is then used in the kitchen giving the children the opportunity to understand the processes involved.



Extended Opportunities

If you need child care before and after school, we provide outstanding care through our Breakfast and Afterschool Clubs. Children attending our extended provision are offered a range of activities to participate in, these include crafts, outdoor activities, games, drawing, gardening and sports. It is also an opportunity for the children to unwind and relax and chat to their friends and adults about their day. Children are offered healthy breakfasts and snacks while in our extended provision.

Our extended provision adheres to the school's policies and procedures and works in partnership with our families to ensure that the children are well cared for and enjoy their time in our provision.



Our School Governors

The Governors at Brixham C of E Primary are committed to providing the best possible education for the children. It is responsible for ensuring that the school operates in accordance with its trust deeds and that all statutory obligations are fully met. Governors come from a wide spectrum: church appointed governors, and representatives from the local authority, community and staff.



Brixham C of E Pre-school

Welcome to Brixham C of E Pre-School! We believe that the children and adults flourish in a happy, caring and well-structured environment. Parents are their child's first educators and we aim to create a partnership with you and your child and nurture and support that partnership during your time with us.

We offer a high quality education to children from the local area from the ages of 3-5 years. Our staff are vastly experienced in child care and early years' education and are committed to ensuring that each child reaches their full potential. We work alongside the primary school and share the same site, our children get to know what school life is like throughout their time with us and become really well prepared for the next stage of their school journey.

We offer an engaging and stimulating curriculum enabling children to have a life-long love of learning and an appreciation of the world around them. We aim to empower children by offering them opportunities to make decisions and solve problems, building their confidence whilst learning through play.

Each child is unique and our staff are professionally trained to identify each child's strengths and adapt plans to support the child's developing needs. We promote cultural values and support positive relationships and respectful interactions.



Brixham Church of England Primary School & Pre-School
Higher Ranscombe Road,
Brixham,
Devon
TQ5 9HF

01803 882575

admin.brixham@acexcellence.co.uk