



Brixham C of E Primary School

Higher Ranscombe Road, Brixham, TQ5 9HF

01803 882575

admin.brixham@acexcellence.co.uk

Autumn 2 - 2022- Newsletter

Dear Parents and Carers,

This will be our final newsletter for 2022 and what a year it has been!

As we approach the Festive season, it's a time when we begin to think about all that we are grateful for. It is also a time for celebrations to begin! This term we have all enjoyed being able to welcome our families back into school. It has been absolutely wonderful to see everyone. Teachers particularly relished the opportunity to meet with so many of you at our parents' evening and share the amazing work that the children have been doing and the progress that they have been making.

This half term the children have completed a huge variety of learning experiences from looking at our local area with visits to Berry Head to thinking about what life was like in the past for the Egyptians. As always, it has been an absolute pleasure to spend time with all of the children talking about what they have learnt and seeing the pride they take in their work. This term we have also enjoyed coming together and getting out in the community with visits to Exeter, Forest School, swimming, our lantern parade, as well as welcoming guests into our school.

We have a number of music teachers also working in our school offering lessons to the children, if you would like further information on this please contact the school office. Kinetic Sports have also been running after-school clubs every day which many of the children have enjoyed. This Christmas holiday they will be offering holiday clubs, again if you would like further information please do ask the school office.

We hope that you all have a wonderful Christmas break with families and loved ones. Thank you for your continuing support.

Best Wishes

Cristy Nelson



Our School Ethos



Vision & Values

“Life in all its fullness.”

This half term our focus is on **LEADERSHIP**. We are thinking about how we act with **integrity**, **authenticity** and **determination**. We will be focusing on our Church School value of **INSPIRATION** and thinking about how we **INSPIRE** those around us.

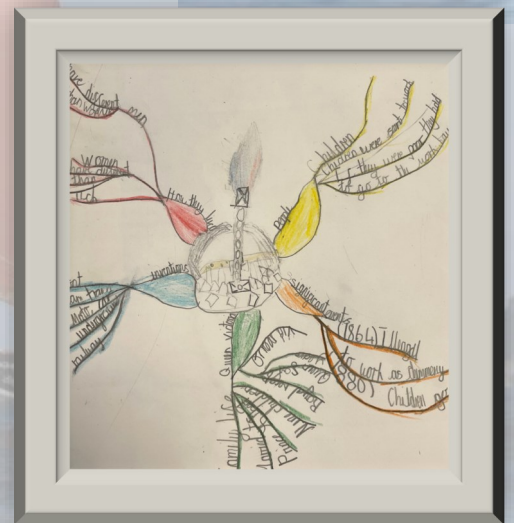


Year 2 have been inspiring others in maths by becoming experts.

Matilda and Sofia from Year 6 showed Leadership as our School Librarians.



Ezra showed leadership by researching Nelson Mandela and sharing it with Year 4.



Year 4 showed leadership when participating in a quiz about the Victorians. They created a mind map to help them.



In Year 1 Muireann has shown leadership by being determined to complete her maths challenge collaboratively.

Next half term we will be thinking about **EXPLORATION**, we will be thinking about how we seek challenges as we aspire. We will be focusing on our Church School value of **PASSION** and thinking about what we are passionate about and how we show this.

Our Learning



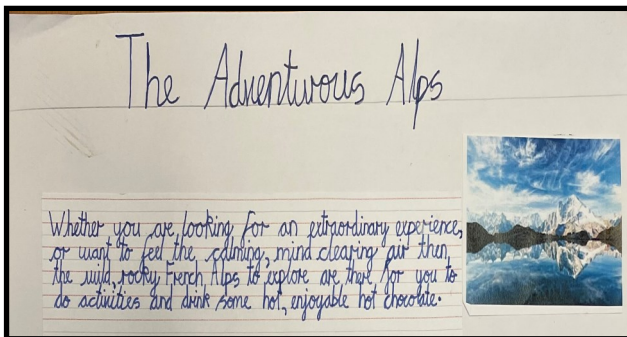
*Pre-school have been learning how to talk about and sequence stories by reading *The Enormous Turnip*.*



Year 3 have been learning about friendship and what it means to be excluded.



Our Reception class have been learning about celebrations. We had fun icing biscuits!



*In Geography, Year 4 wrote a tourist leaflet about *The French Alps*.*



*Year 2 have visited *Berry Head* to learn why the forts were built.*



Year 3 wrote a diary entry from the perspective of a Roman soldier.



Year 6 have been making virtual and actual circuits to learn about electricity and how to use it safely.



Year 5 had a great time learning about the Egyptians at the RAMM in Exeter

What our children say...

Maddie and Erin (year 6). During this half term, we have been concentrating on showing leadership—our current character gateway. This has been done by being aware of our school environment. We have been taking care of the Quiet Courtyard and our Year 6 Librarians have made sure that the School Library is under control and organised. All children in the school have been showing leadership by taking responsibility for raising money for Rowcroft Hospice by taking part in the Rudolph Run. We hope you sponsor your child to raise funds for this worthwhile cause.

Pupil Voice

Events and Celebrations

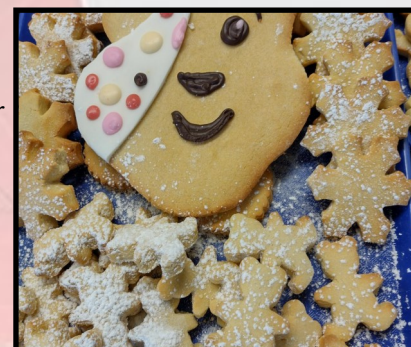


It was wonderful to have so many families joining us to make lanterns and then waving us on at our lantern parade.



Thank you to our families for joining us in our class-led worships this term.

*Thank you for all of your support with our 'Children In Need' non-uniform day. We managed to raise £136.26
THANK YOU!*



Thank you for your kind donations at Harvest, these all went to Brixham Food Bank who were extremely grateful.



All classes collaborated to make wreaths of poppies as we remembered those who lost their lives fighting for our country.

Future Events & Dates for your diary

Tuesday 6th December	Christingle Service
Thursday 8th December	Reception Nativity
Friday 9th December	Reception Nativity
Monday 12th December	Bottom Drawer Sale
Tuesday 13th December	Christmas Carols and Christmas Fayre
Wednesday 14th December	Christmas Jumper Day and Christmas Lunches
Friday 16th December	Big Night In
Friday 16th December	Break-up for Christmas Holidays
Tuesday 3rd January	Return to school

Church School Links

Thank you to anyone who packed a shoebox for Operation Christmas Child. The church collected nearly 600 boxes to send to children around the world who will have very little this Christmas. We have lots of festive services as Christmas approaches. There are traditional Carols by Candlelight at 7pm on Friday 16th December at All Saints and 6.30pm on Sunday 18th December at St Mary's. On Christmas Eve, St Mary's has a Family Crib Service at 4pm and All Saints has a Nativity Play at 4pm, there is no need to practice for either, just turn up and get a part! Finally we have Midnight Services at All Saints and St Mary's at 11.30pm on Christmas Eve and Christmas communion at 10am on Christmas Day. Everyone at Church hopes you have a really peaceful Christmas.

Key messages from us all



Thank you!!

We would like to say a huge thank you for all of your support throughout the past few years. It has been wonderful to have a whole term without any Covid disruptions and to welcome so many of you back into school. Thank you!

Thank You!

School Uniform

Please can we remind all families that we expect all children to wear the correct school uniform. Our school uniform policy can be found on our school website.



Please follow the link below;

[https://
www.brixhamcofe.org/
uniform](https://www.brixhamcofe.org/uniform)

Bottom Drawer Sale

If you have any unwanted gifts at home that you would like to donate to the PTFA for our bottom drawer sale we would be very grateful. The Bottom Drawer Sale allows all of our children the opportunity to give a gift to a loved one at Christmas. Please can all gifts



be in school by Friday 9th December ready for our sale on 12th December.

School Lunches

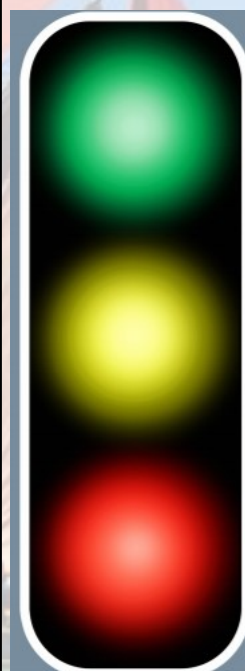
Please can all school lunches for all children be booked on ParentPay. This is vital to ensure we keep our costs and waste to a minimum

Thank you.

Attendance for weeks 15.10.22—02.12.22

Whole School	91.20
Year Group	% Attendance
Reception	86.24
1	90.34
2	90.62
3	94.60
4	93.52
5	90.66
6	92.02

Attendance Matters



95 to 100%

Congratulations on reaching the school target! You're showing school is important.

91 to 94%

Be careful you are missing too many days of learning. This will have an effect on your progress.

Below 85%

Please try harder to come to school every day. The amount of school you have missed will have an impact on your learning and your education is very important.

“life in all its fullness.”