

Supporting Children at School with Medical Conditions Policy

Reference: WP/Safeguarding

Policy date	July 2018	Statutory Policy - Yes
Board Approval	July 2018	
Reviewed	September 2024	
Next Review Date	September 2026	Review cycle every 2 years
Author	WP/BS	www.acexcellence.co.uk

Who should use this policy?

This policy will apply to all parents and staff of the Academy for Character and Excellence in relation to supporting pupils at school with a medical condition.

This policy will be reviewed biannually unless significant changes occur before the review date.

Contents

1. Aims	3
2. Legislation and statutory responsibilities	3
3. Roles and responsibilities	3
3.1 The Local Advocate Board (LAB)	3
3.2 The headteacher	4
3.3 Staff	4
3.4 Parents/carers	4
3.5 Pupils	5
3.6 School nurse team and other health care professionals	5
4. Equal opportunities	5
5. Being notified that a child has a medical condition	5
6. Individual healthcare plans (IHPs)	6
8. Managing Medicines on School Premises	7
9. Emergency procedures	7
10. Training	7
11. Record keeping	8
12. Complaints	8
13. Compliance Checklist	8
Appendix 1: Being notified a child has a medical condition	9
Appendix 2 - Individual Healthcare Plan Template	10
Appendix 3 – ensure this letter is sent with the healthcare plan to the parents.	Error! Bookmark not defined.

1. Aims

This policy aims to ensure that:

- Pupils, staff and parents/carers understand how our school will support pupils with medical conditions
- Pupils with medical conditions are properly supported to allow them to access the same education as other pupils, including school trips and sporting activities

The Local Advocate Board will implement this policy by:

- Making sure sufficient staff are suitably trained
- Making staff aware of pupils' conditions, where appropriate
- Making sure there are cover arrangements to ensure someone is always available to support pupils with medical conditions
- Providing supply teachers with appropriate information about the policy and relevant pupils
- Developing and monitoring individual healthcare plans (IHPs)

The named person with responsibility for implementing this policy is Nicola Hartley.

2. Legislation and statutory responsibilities

This policy meets the requirements under [Section 100 of the Children and Families Act 2014](#), which places a duty on Local Advocate Boards to make arrangements for supporting pupils at their school with medical conditions.

It is also based on the Department for Education (DfE)'s statutory guidance on [supporting pupils with medical conditions at school](#).

This policy also complies with our funding agreement and articles of association.

3. Roles and responsibilities

3.1 The Local Advocate Board (LAB)

The LAB has ultimate responsibility to make arrangements to support pupils with medical conditions. The LAB will ensure that sufficient staff have received suitable training and are competent before they are responsible for supporting children with medical conditions.

3.2 The headteacher

The headteacher will:

- Make sure all staff are aware of this policy and understand their role in its implementation
- Ensure that there is a sufficient number of trained staff available to implement this policy and deliver against all individual healthcare plans (IHPs), including in contingency and emergency situations
- Ensure that all staff who need to know are aware of a child's condition
- Take overall responsibility for the development of IHPs
- Contact the school nursing service in the case of any pupil who has a medical condition that may require support at school, but who has not yet been brought to the attention of the school nurse team
- Ensure that systems are in place for obtaining information about a child's medical needs and that this information is kept up to date

3.3 Staff

Supporting pupils with medical conditions during school hours is not the sole responsibility of 1 person. Any member of staff may be asked to provide support to pupils with medical conditions, although they will not be required to do so without appropriate training. This includes the administration of medicines.

Those staff who take on the responsibility to support pupils with medical conditions will receive sufficient and suitable training, and will achieve the necessary level of competency before doing so.

Teachers will take into account the needs of pupils with medical conditions that they teach. All staff will know what to do and respond accordingly when they become aware that a pupil with a medical condition needs help.

3.4 Parents/carers

Parents/carers will:

- Provide the school with sufficient and up-to-date information about their child's medical condition and needs
- Be involved in the development and review of their child's IHP and may be involved in its drafting

- Carry out any action they have agreed to as part of the implementation of the IHP, e.g. provide medicines and equipment, and ensure they or another nominated adult are contactable at all times

3.5 Pupils

Pupils with medical conditions will often be best placed to provide information about how their condition affects them. Pupils should be fully involved in discussions about their medical support needs and contribute as much as possible to the development of their IHPs. They are also expected to comply with their IHPs.

3.6 School nurse team and other health care professionals

Our school nurse team will notify the school when a pupil has been identified as having a medical condition that will require support in school. This will be before the pupil starts school, wherever possible. They may also support staff to implement a child's IHP. Healthcare professionals, such as GPs and pediatricians, will liaise with the school's nurse team and school staff and notify them of any pupils identified as having a medical condition. They may also provide advice on developing IHPs.

4. Equal opportunities

Our school is clear about the need to actively support pupils with medical conditions to participate in school trips and visits, or in sporting activities, and not prevent them from doing so.

The school will consider what reasonable adjustments need to be made to enable these pupils to participate fully and safely on school trips, visits and sporting activities.

Risk assessments will be carried out so that planning arrangements take account of any steps needed to ensure that pupils with medical conditions are included. In doing so, pupils, their parents/carers and any relevant healthcare professionals will be consulted.

5. Being notified that a child has a medical condition

When the school is notified that a pupil has a medical condition, the process outlined below will be followed to decide whether the pupil requires an IHP.

The school will make every effort to ensure that arrangements are put into place within 2 weeks, or by the beginning of the relevant term for pupils who are new to our school.

See Appendix 1.

6. Individual healthcare plans (IHPs)

The headteacher has overall responsibility for the development of IHPs for pupils with medical conditions. This has been delegated to the relevant member of staff.

Plans will be reviewed at least annually, or earlier if there is evidence that the pupil's needs have changed.

Plans will be developed with the pupil's best interests in mind and will set out:

- What needs to be done
- When
- By whom

Not all pupils with a medical condition will require an IHP. It will be agreed with a healthcare professional and the parents/carers when an IHP would be appropriate. This will be based on evidence. If there is no consensus, the headteacher will make the final decision.

Plans will be drawn up in partnership with the school, parents/carers and a relevant healthcare professional, such as the school nurse team, specialist or pediatrician, who can best advise on the pupil's specific needs. The pupil will be involved wherever appropriate.

IHPs will be linked to, or become part of, any education, health and care (EHC) plan. If a pupil has special educational needs and disabilities (SEND) but does not have an EHCP, the SEND will be mentioned in the IHP.

The level of detail in the plan will depend on the complexity of the child's condition and how much support is needed. The LAB and the headteacher and the relevant member of staff with responsibility for developing IHPs, will consider the following when deciding what information to record on IHPs:

- The medical condition, its triggers, signs, symptoms and treatment
- The pupil's resulting needs, including medication (dose, side effects and storage) and other treatments, time, facilities, equipment, testing, access to food and drink where this is used to manage their condition, dietary requirements and environmental issues, e.g. crowded corridors, travel time between lessons

- Specific support for the pupil's educational, social and emotional needs. For example, how absences will be managed, requirements for extra time to complete exams, use of brain breaks or additional support in catching up with lessons
- The level of support needed, including in emergencies. If a pupil is self-managing their medication, with a staff member, this will be clearly stated with appropriate arrangements for monitoring
- Who will provide this support, their training needs, expectations of their role and confirmation of proficiency to provide support for the pupil's medical condition from a healthcare professional, and cover arrangements for when they are unavailable
- Who in the school needs to be aware of the pupil's condition and the support required
- Arrangements for written permission from parents/carers and the headteacher for medication to be administered by a member of staff, or self-administered by the pupil and supporting staff member during school hours
- Separate arrangements or procedures required for school trips or other school activities outside of the normal school timetable that will ensure the pupil can participate, e.g. risk assessments
- Where confidentiality issues are raised by the parent/carer or pupil, the designated individuals to be entrusted with information about the pupil's condition
- What to do in an emergency, including who to contact and contingency arrangements

8. Managing Medicines on School Premises

Refer to the Medication Policy for further information

9. Emergency procedures

Staff will follow the school's normal emergency procedures (for example, calling 999). All pupils' IHPs will clearly set out what constitutes an emergency and will explain what to do. If a pupil needs to be taken to hospital, staff will stay with the pupil until the parent/carer arrives, or accompany the pupil to hospital by ambulance.

10. Training

Staff who are responsible for supporting pupils with medical needs will receive suitable and sufficient training to do so.

The training will be identified during the development or review of IHPs. Staff who provide support to pupils with medical conditions will be included in meetings where this is discussed.

The relevant healthcare professionals will lead on identifying the type and level of training required and will agree this with the headteacher / relevant staff member. Training will be kept up to date.

Training will:

- Be sufficient to ensure that staff are competent and have confidence in their ability to support the pupils
- Fulfil the requirements in the IHPs
- Help staff to have an understanding of the specific medical conditions they are being asked to deal with, their implications and preventative measures

Healthcare professionals will provide confirmation of the proficiency of staff in a medical procedure, or in providing medication.

All staff will receive training so that they are aware of this policy and understand their role in implementing it, for example, with preventative and emergency measures so they can recognise and act quickly when a problem occurs. This will be provided for new staff.

11. Record keeping

The LAB will ensure that written records are kept of all medicine administered to pupils for as long as these pupils are at the school. Parents/carers will be informed if their pupil has been unwell at school.

IHPs are kept in a readily accessible place that all staff are aware of.

12. Complaints

Parents/carers with a complaint about the school's actions in regard to their child's medical condition should discuss these directly with the headteacher / teacher in the first instance. If the headteacher / teacher cannot resolve the matter, they will direct parents/carers to the school's complaints procedure.

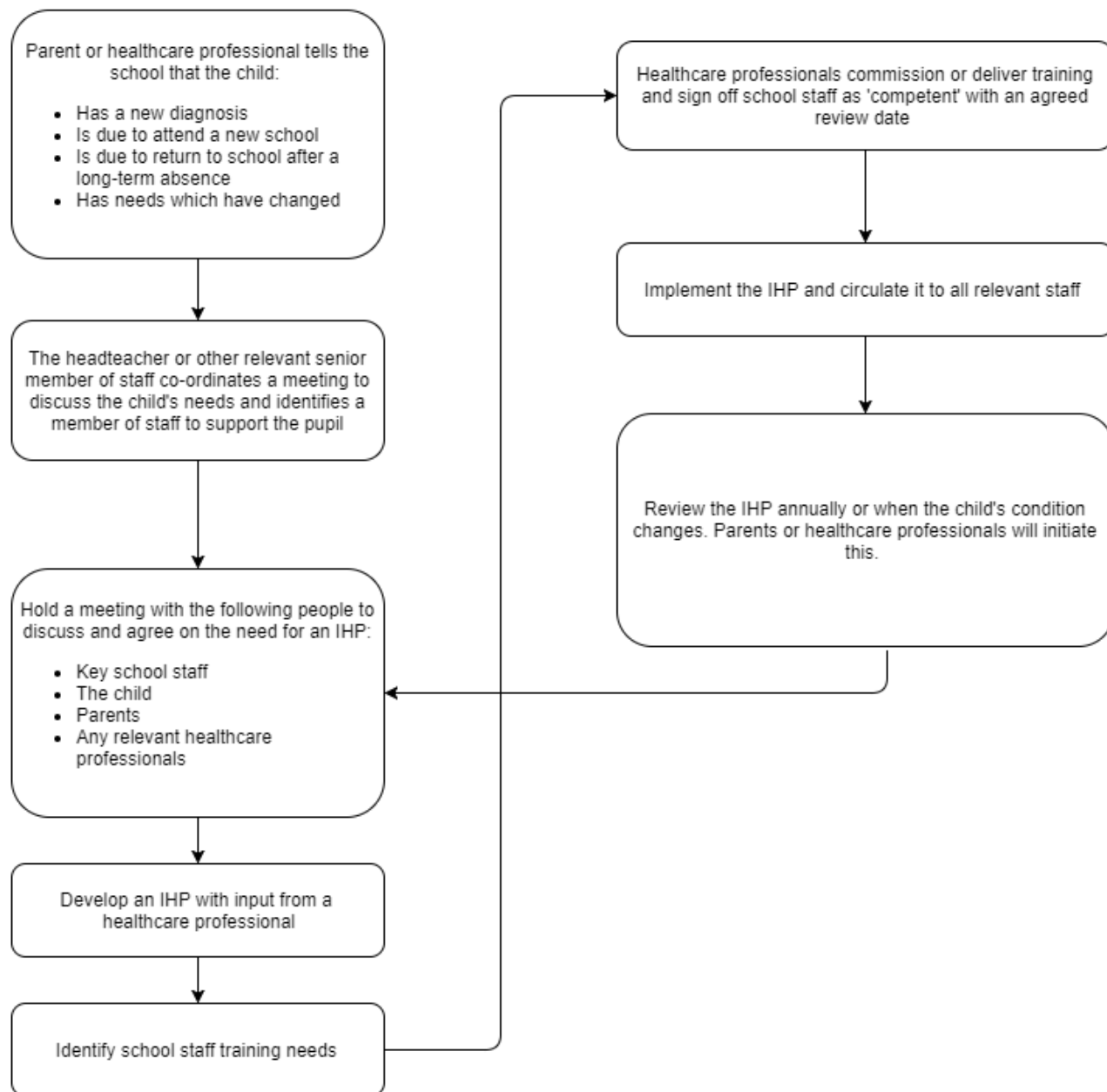
13. Compliance Checklist

How are we putting these arrangements in place? How are all staff aware of the child's

needs?

Ensure you have a medical training file – or a central place where you collate this information.

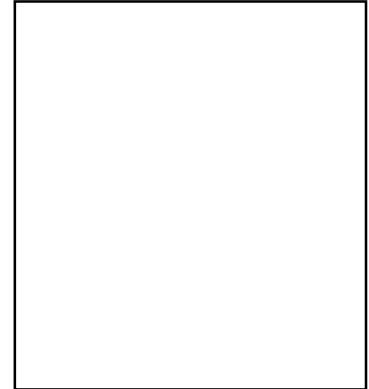
Appendix 1: Being notified a child has a medical condition



Appendix 2 - Individual Healthcare Plan Template

Photo

Childs Name	
Class	
Date of Birth	
Address	



Medical Diagnosis or condition	
Date	
Review Date	
Family Contact Information	
Name	
Contact number Work	
Home	
Mobile	
Relationship to child	
Clinic/Hospital Contact	
Name	
Phone	
G.P. Details	
Name of Doctors Surgery	
G.P. Name	
Phone	

Who is responsible for providing support in School?

Describe medical needs and give details of child's symptoms, triggers, signs, treatments, facilities, equipment or devices, environmental issues etc.

Name of medication, dose, method of administration, when to be taken, side effects, contra- indications, administered by/self-administered with/without supervision.

Daily care requirements (if any)

Specific support for the pupil's educational, social and emotional needs (if relevant)

Arrangements for school visits/trips etc.

Other information

Describe what constitutes an emergency, and the action to take if this occurs

Who is responsible in an emergency (*state if different for off-site activities*)

Plan developed with (medical person/team/parents)

Staff training needed/undertaken - who, what, when

Form copied to (teacher/allocated staff/parent or carer/medical team or person)

Signed..... Print Name.....

Dated.....